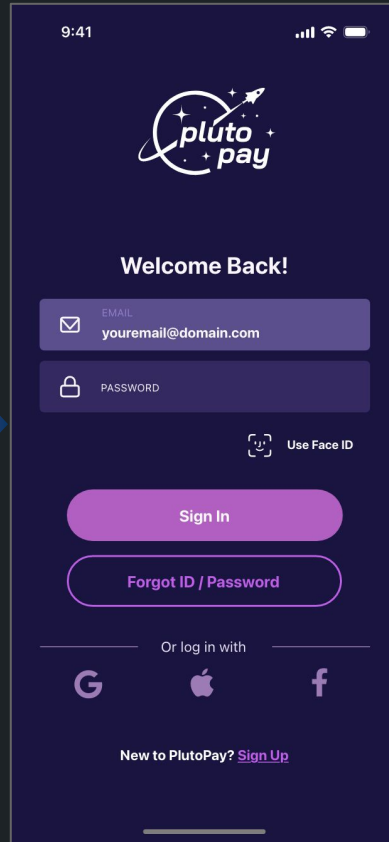
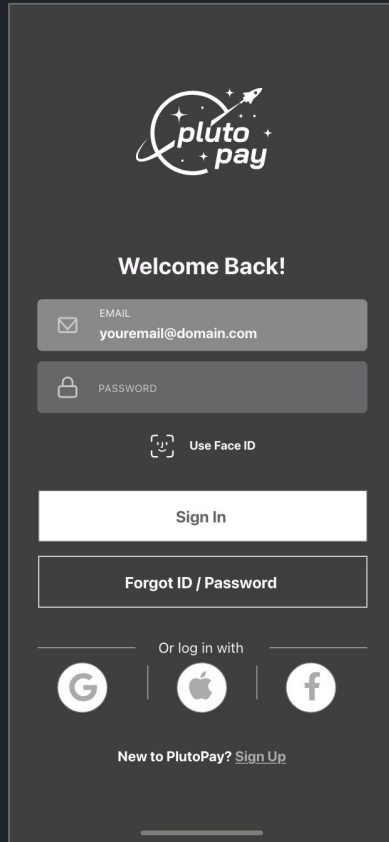


Initial Visual Design Considerations



PlutoPay

LOGIN SCREEN

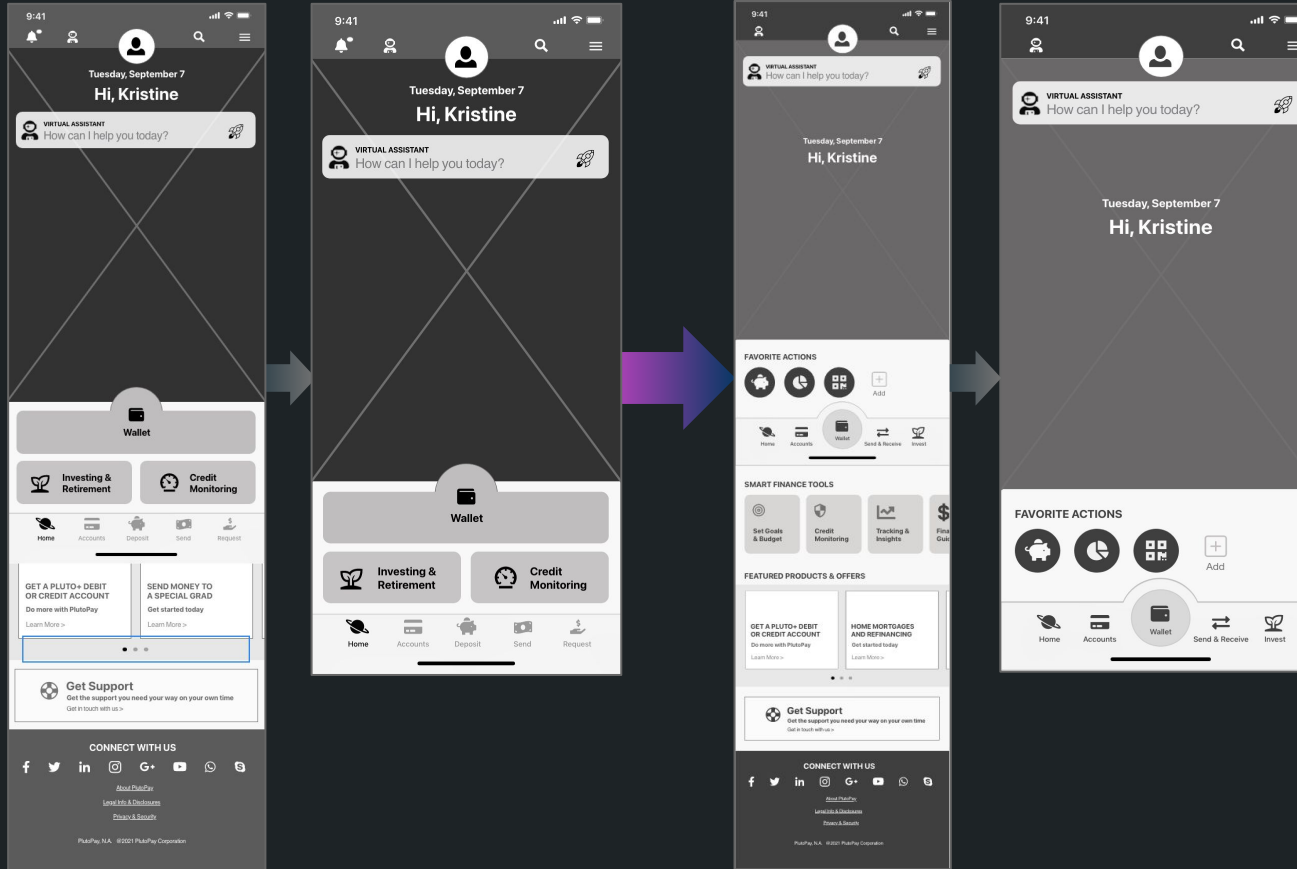


USING MATERIAL DESIGN COMPONENTS

Buttons and Text Fields

- Use of filled and outlined buttons, but changed to rounded corners with ample room around the text per their guidelines
- Use of filled button strategically to highlight primary function
- Use of outlined button signifies secondary function
- Text button used for "Sign Up" in this function bc this screen is primarily for returning users. The hierarchy shifts when we are taken back to the Sign Up for an Account page.
- Buttons are placed stacked keeping the responsive nature in mind
- Standard icon buttons used for other types of login methods
- Icon is placed on the left of the Text Button for Use of Face ID
- Design uses filled text fields for the login. A highlight will be used to let users know which field they are currently on.
- Label text for the text fields slides up when users start typing their information.

Updated Home Page

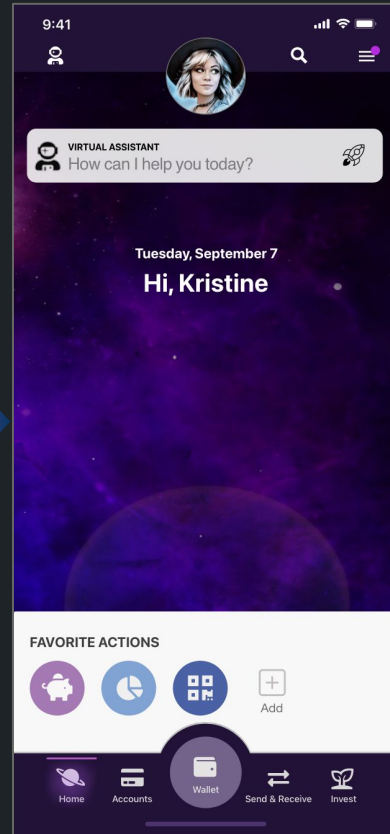
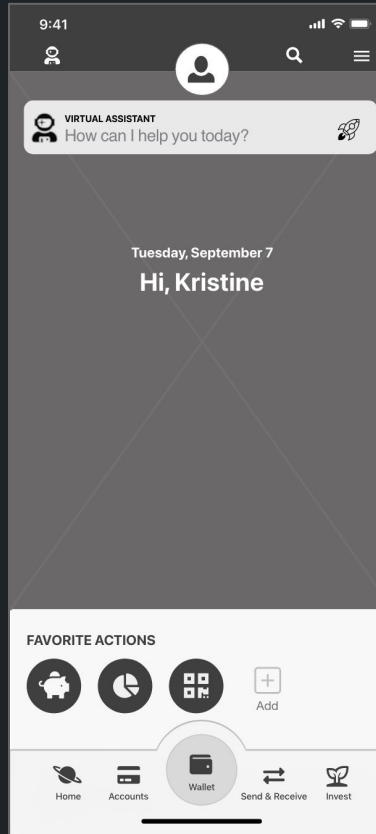


In a previous module after the user testing, I modified the homepage to incorporate some of the solutions identified to solve some of the issues our users were facing. I ran a hybrid of informal user testing and a/b testing on the modified version to see if the updated design is headed in the right direction.

FINDINGS

A majority of the test participants mentioned that the wallet seemed out of place ("odd placement"). Some struggled with the grouping and the hierarchy of the main navigation. Some of the users mentioned the lack of being able to pin actions or favorites (consistent with the formal user testing session). These are the three primary points identified to influence the updated design of the homepage.

HOMEPAGE

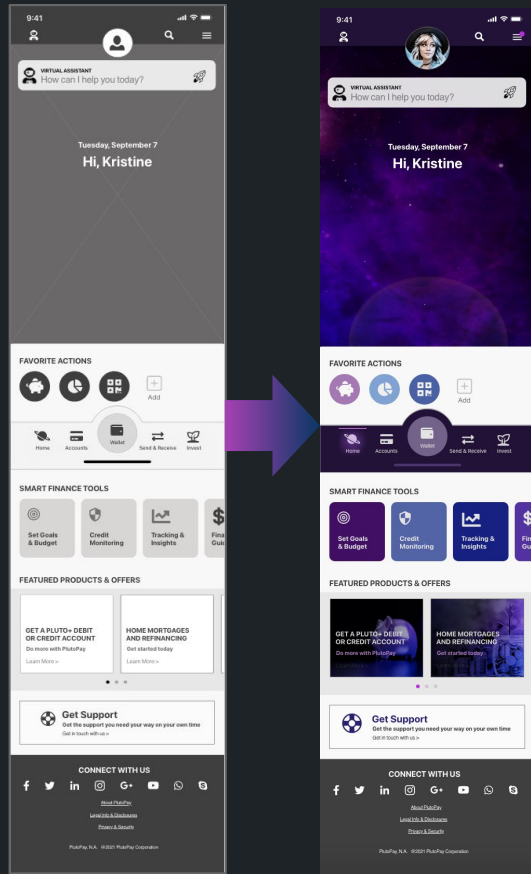


USING MATERIAL DESIGN COMPONENTS

Navigation, Floating Action Buttons, Buttons

- Standard icon buttons used for top navigation materials - Interactive Assistant (Luna), Search and Menu
- Main action menu is located at the bottom and uses standard icons with labels at the bottom for clarity - a current state marker is added to ensure users know what section they are on at all times
- Wallet is a Floating Action Button (contained icon) within the main navigation - different than the other functions in the main menu. While its a main component, it functions differently since when clicked it will trigger a bottom modal sheet to show card categories, where the other main navigation icons open a new page
- Contained icon buttons are used for the favorites to separate them from the main menu items
- A small badge is used to indicate notifications at the top navigation using a bright accent color
- Design utilizes a persistent navigation bar at the bottom and a top app bar with a nested menu icon that expands to a navigation drawer. The bottom navigation bar converts to a navigation rail attached to the right of the navigation drawer but only using icons

HOMEPAGE

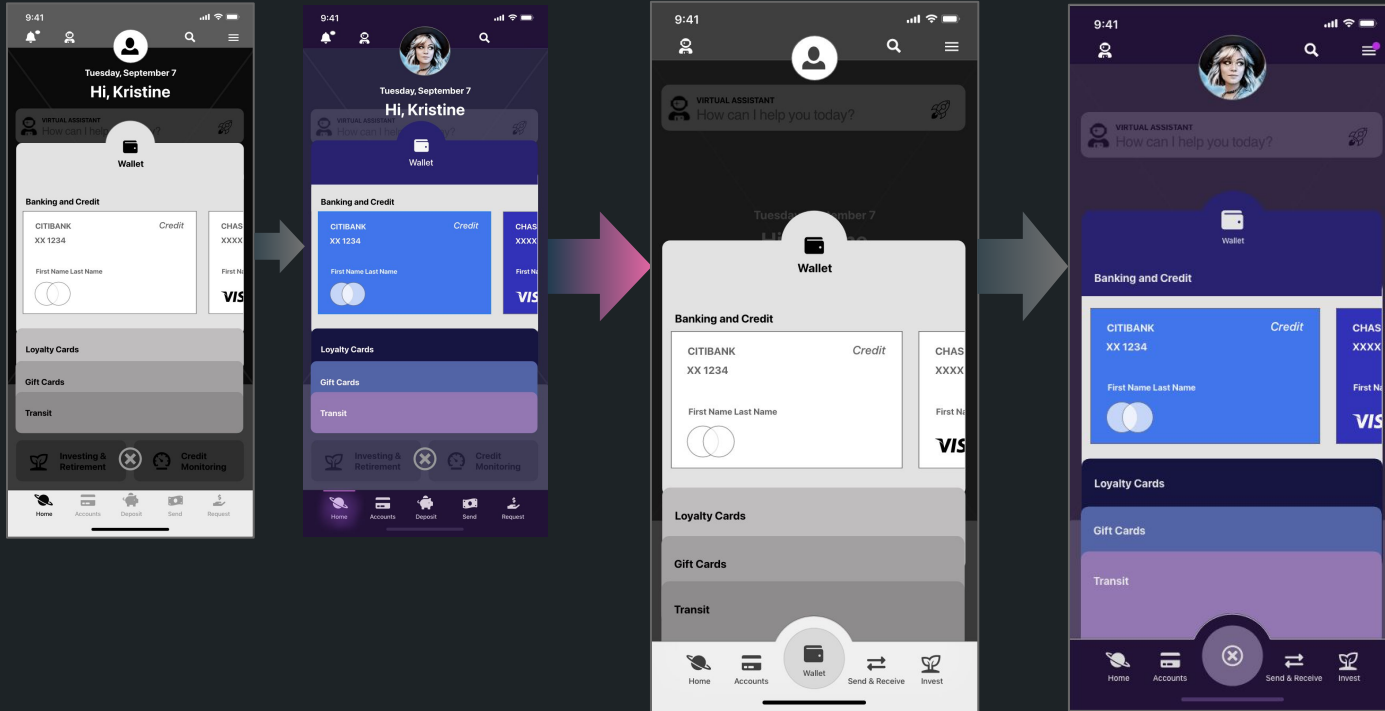


USING MATERIAL DESIGN COMPONENTS

Carousel, Cards and Target Area

- Use of Filled and Outlined Cards in a carousel to add more design consideration and a variety in terms of movement (horizontal scroll) for Finance Tools and products and Offers without adding to the length of vertical scroll
- Product cards utilized the Headline and Subheadline formula while the Financial tool utilized an icon and a headline. Both card collections have cards that utilizes the full area of the card as the target area instead of using a smaller button.

WALLET



USING MATERIAL DESIGN COMPONENTS

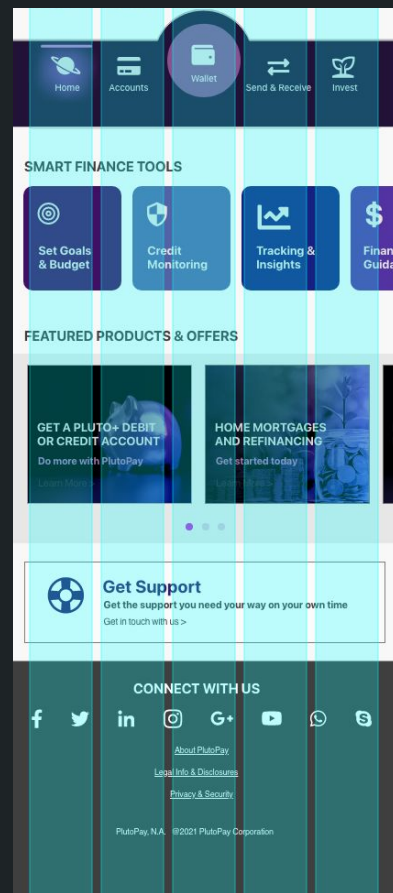
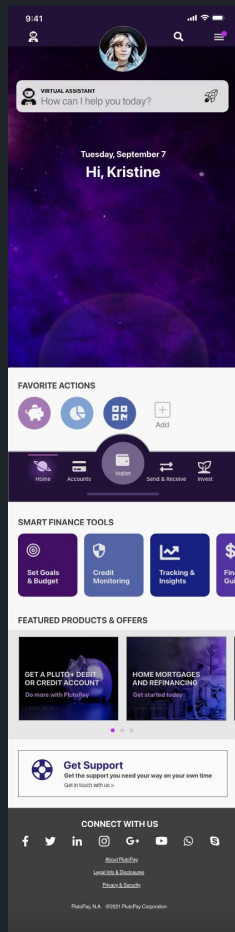
- Wallet is a Floating Action Button - when clicked a bottom modal sheet opens to show card categories
- When open the FAB icon turns into an icon that closes the wallet. Original design was not in the navigation and users felt like it was out of place
- Carousel function is used to showcase the cards in the wallet

Before the Grid

- 5-Column Grid
- 24px margin (0 24px 0 24px)
- 70px wide columns
- 8px wide gutters
- 8px tall row guides

Upon looking at the design, a 5-column grid is utilized since we have 5 items in the navigation. It also allows for flexibility to create asymmetrical layouts if needed for better visual hierarchy.

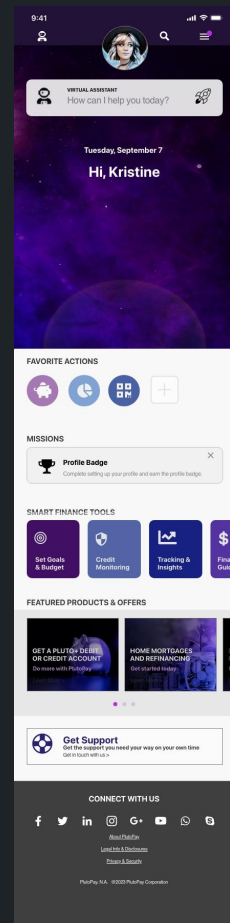
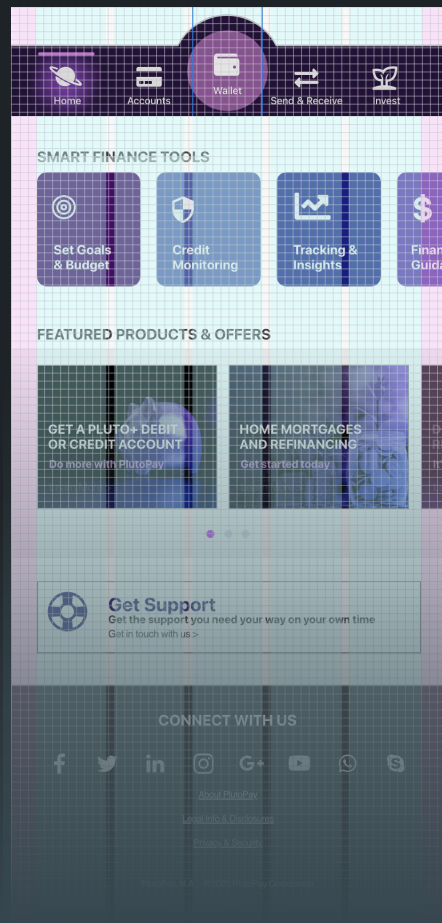
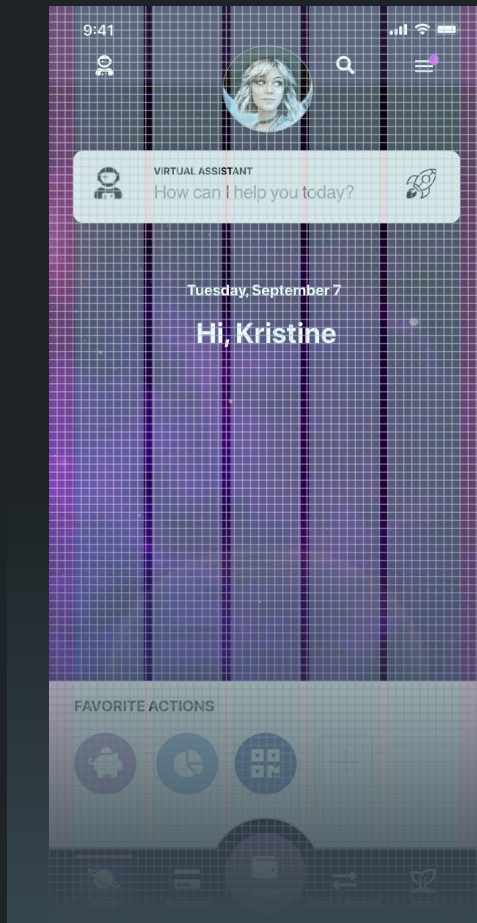
The original design is not too far off after overlaying the grid, but some elements are spanning outside to the margins and some text and item alignment is off. Spacing of multiple items within a group is also a little inconsistent.



After the Grid

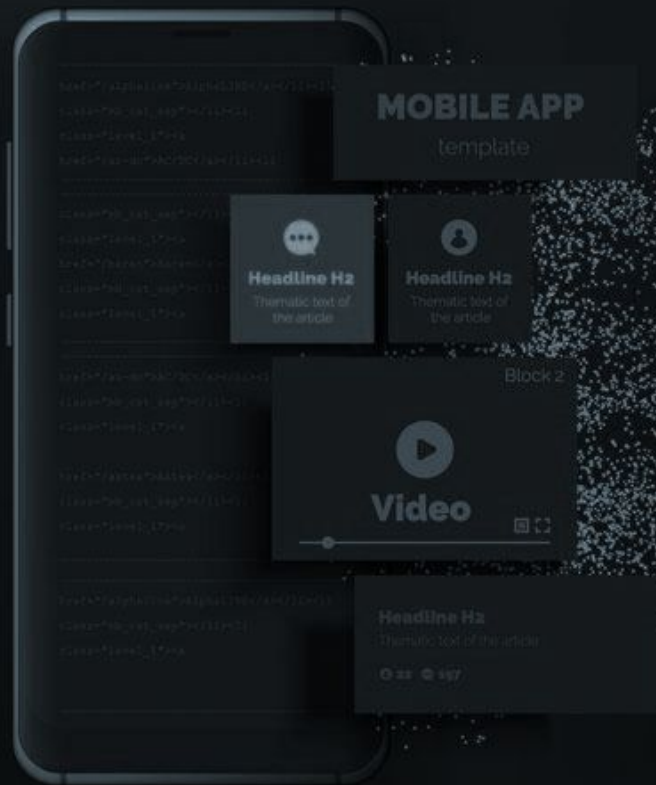
- 5-Column Grid
- 24px margin (0 24px 0 24px)
- 70px wide columns
- 8px wide gutters
- 8px tall row guides

After the grid, the boxes are within the margins and text is anchored nicely. It also creates some consistency with setting margins within buttons with text inside. Elements are spread out nicely within the 5 column grid.



UX

USER
EXPERIENCE
design



THANK YOU